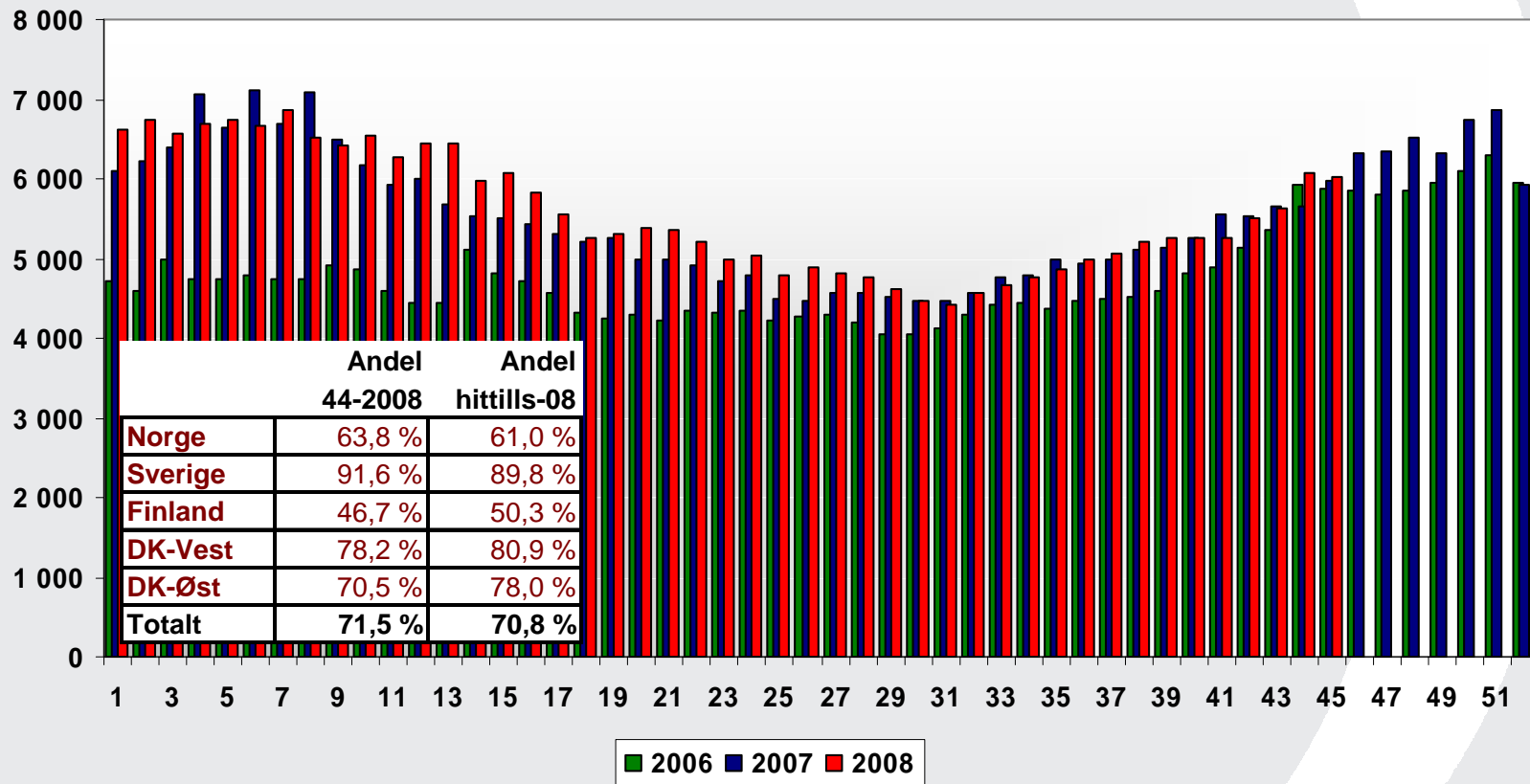
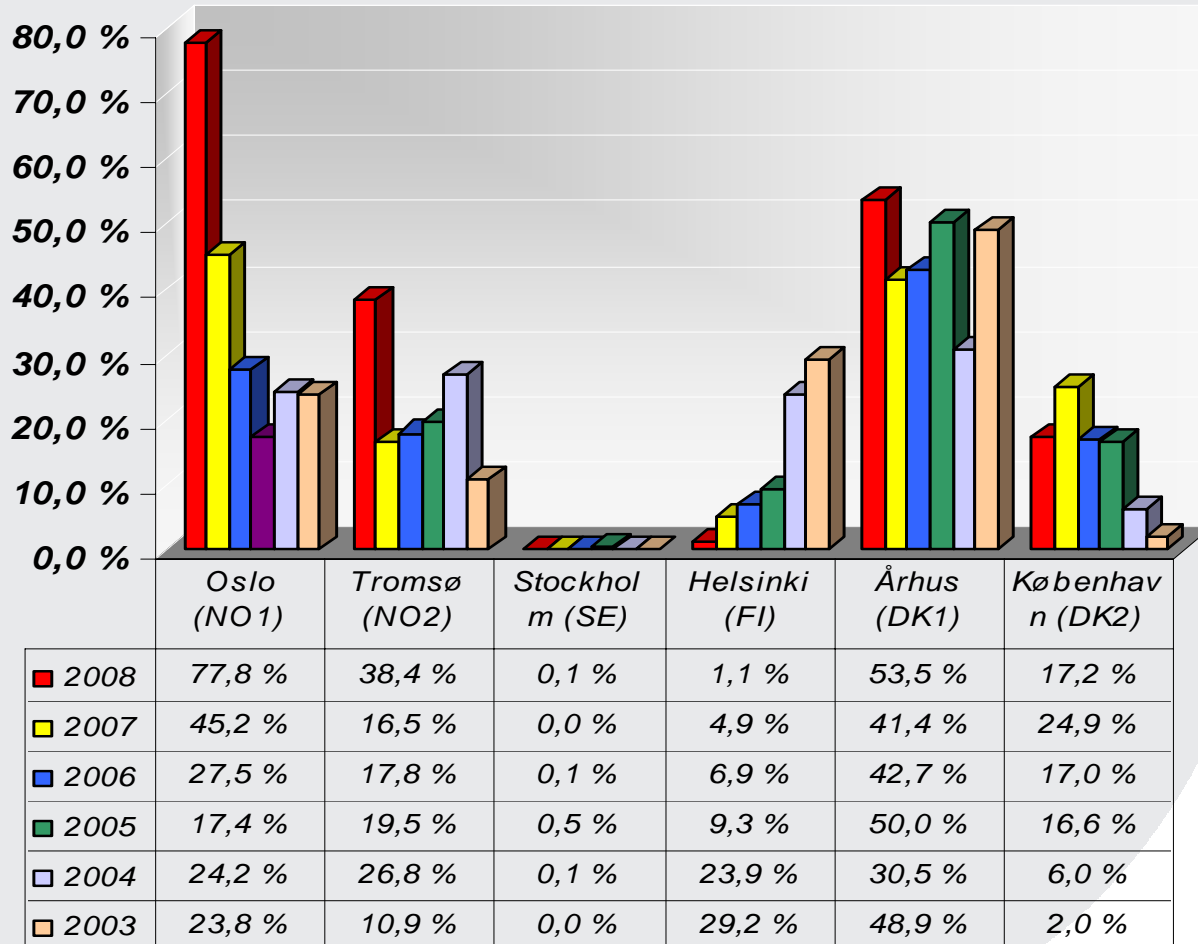


NP Spot volumes 2006, 2007 and 2008



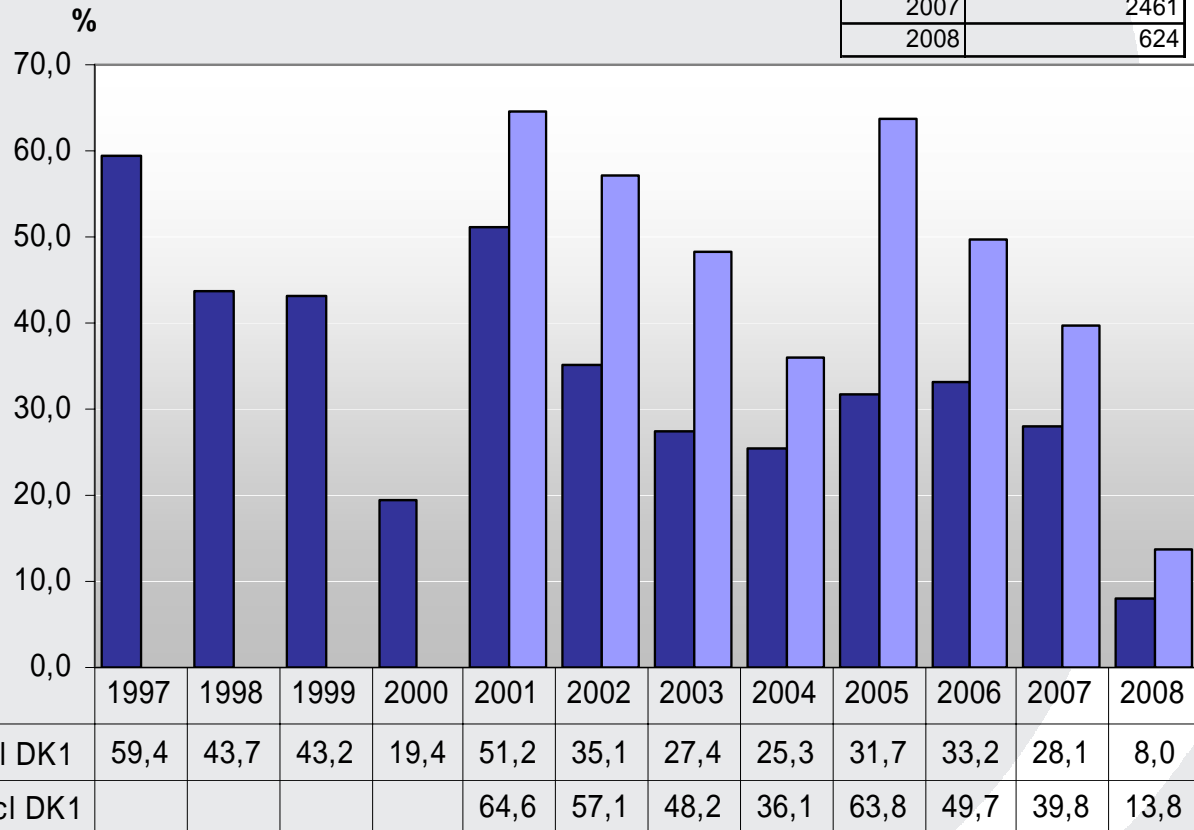
Price areas

Number of hours (in %) where one area is isolated from the rest of the areas.



Common price

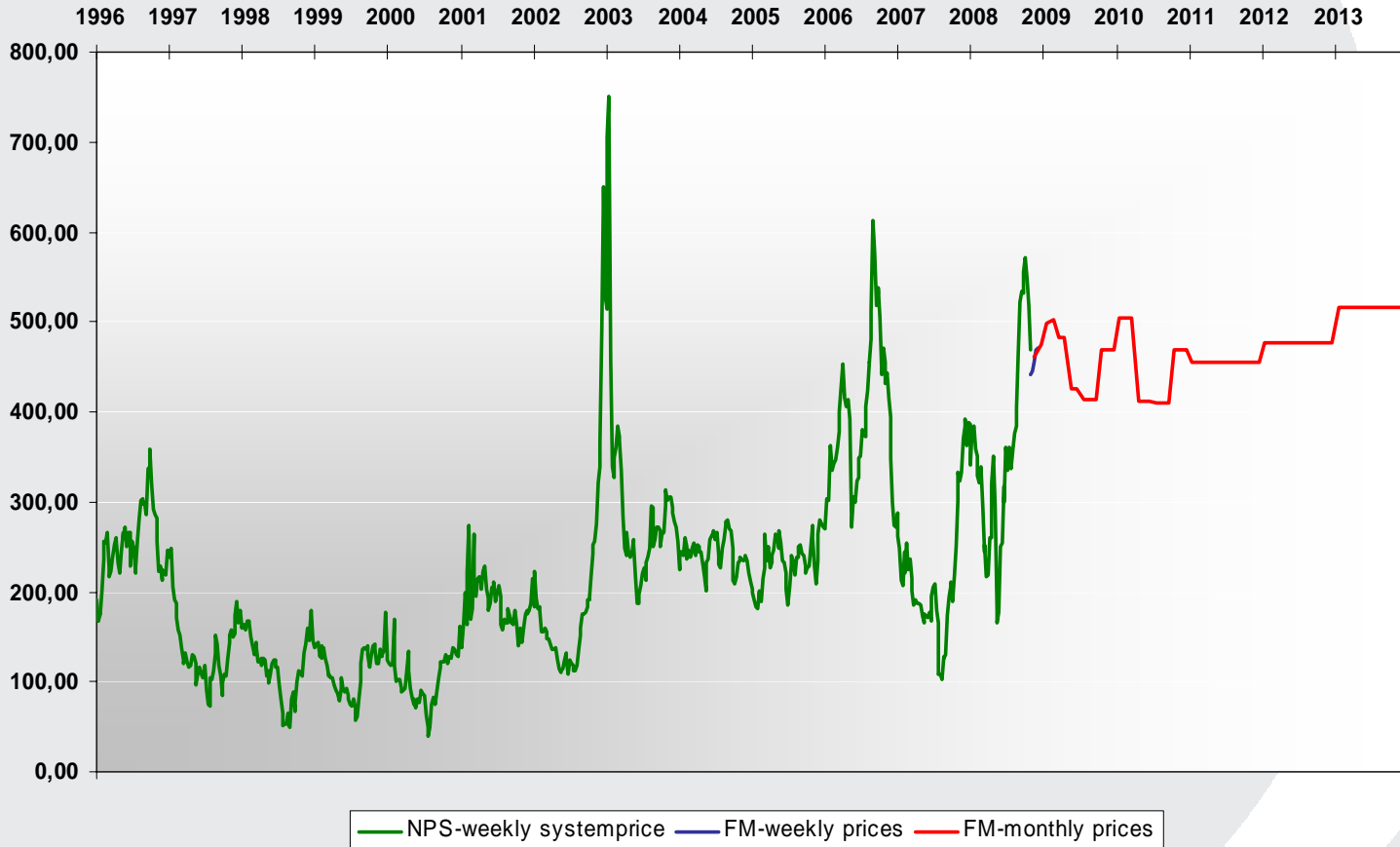
Year	Number of hours
1997	5201
1998	3825
1999	3788
2000	1703
2001	4487
2002	3076
2003	2397
2004	2226
2005	2777
2006	2908
2007	2461
2008	624



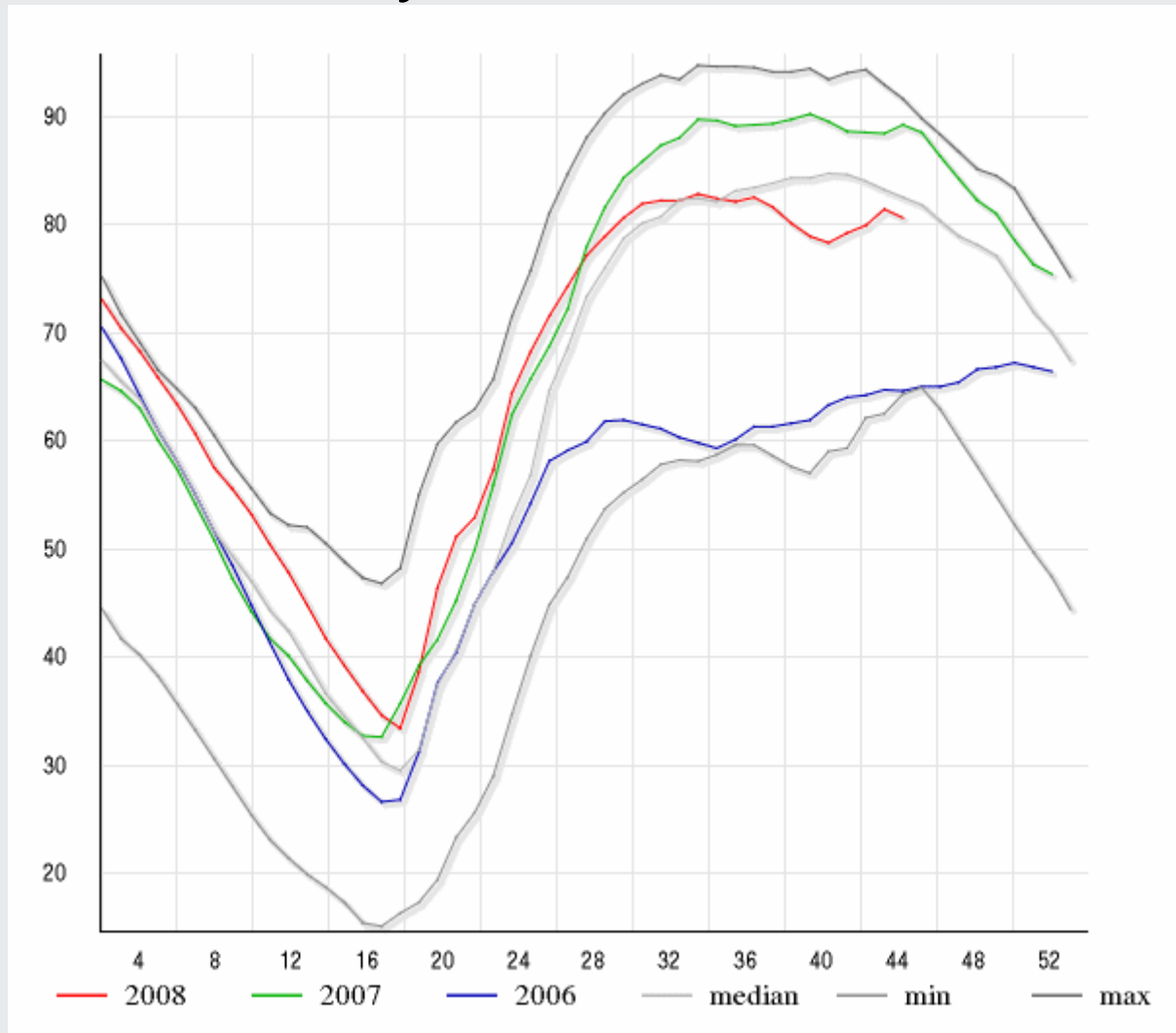
■ Common price incl DK1	59,4	43,7	43,2	19,4	51,2	35,1	27,4	25,3	31,7	33,2	28,1	8,0
■ Common price excl DK1					64,6	57,1	48,2	36,1	63,8	49,7	39,8	13,8

■ Common price incl DK1 ■ Common price excl DK1

Prices at Nord Pool



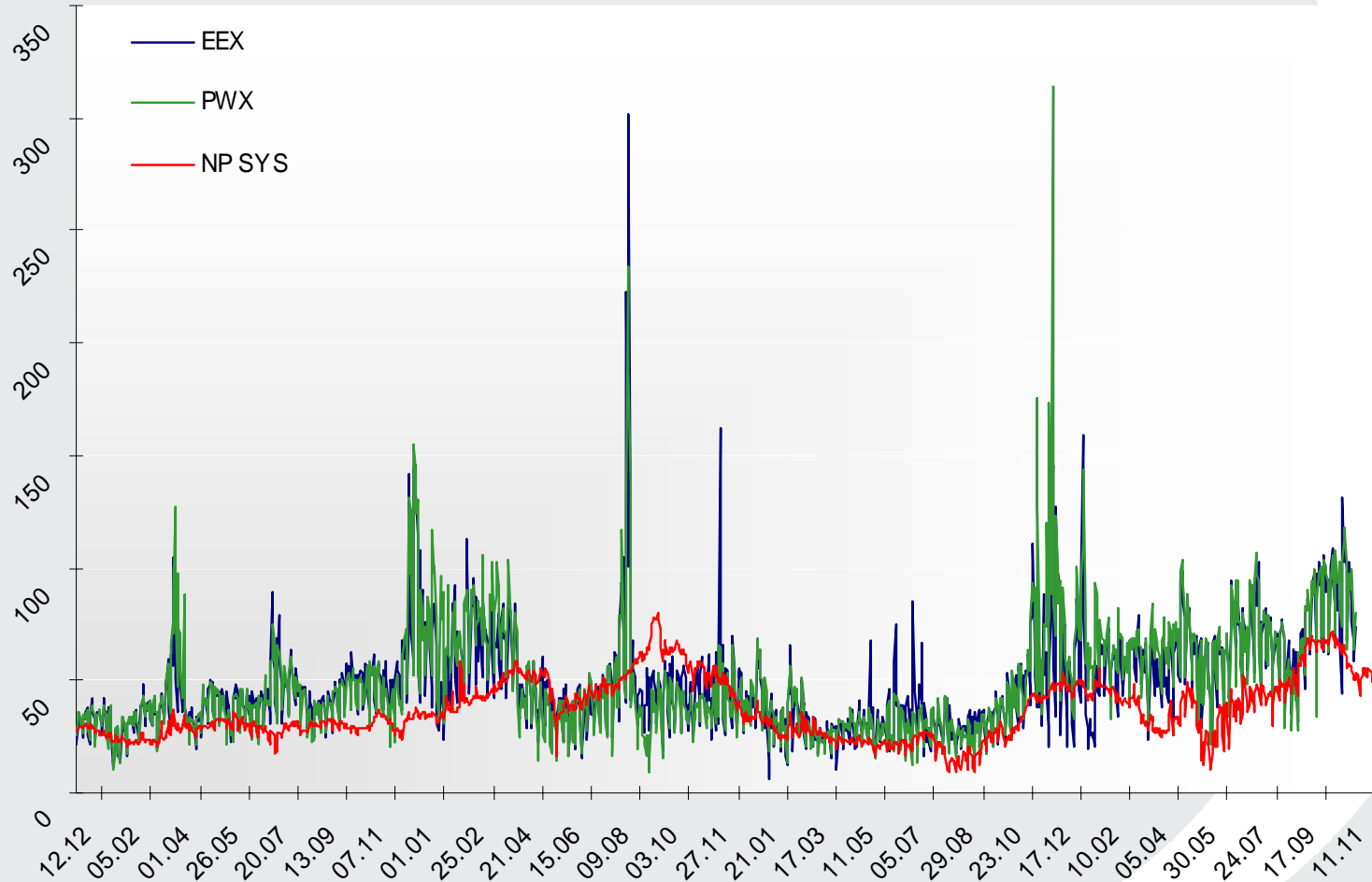
Reservoir level Norway + Sweden + Finland



Prices 3 year comparison

EEX – Powernext – Nord Pool Spot (SYS)

EUR/MWh



Turnover in TWh 1993 – 2007

