



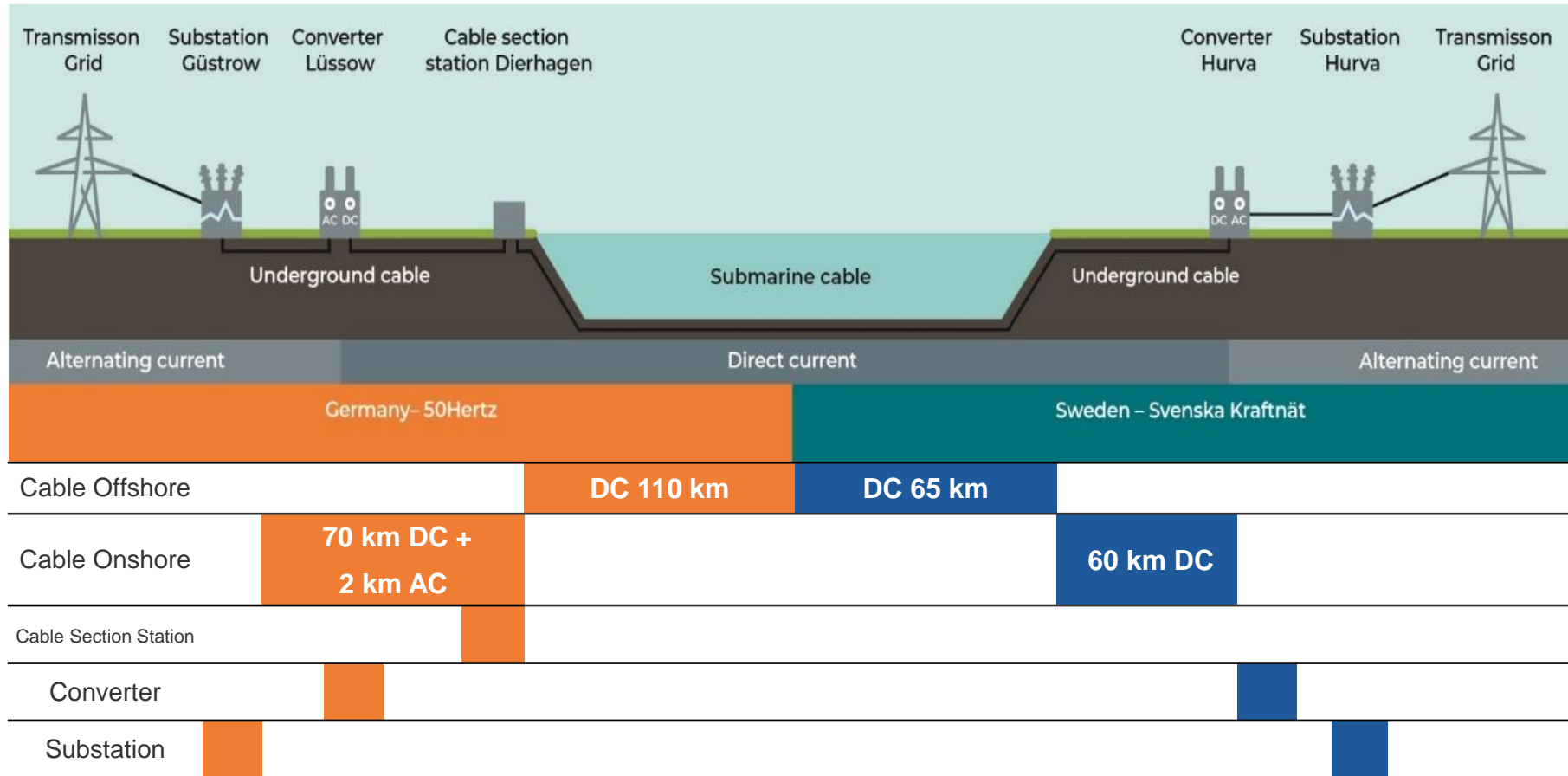
# Hansa PowerBridge

RFI

2021-07-07



# Overview of the project



# Main Technical Data

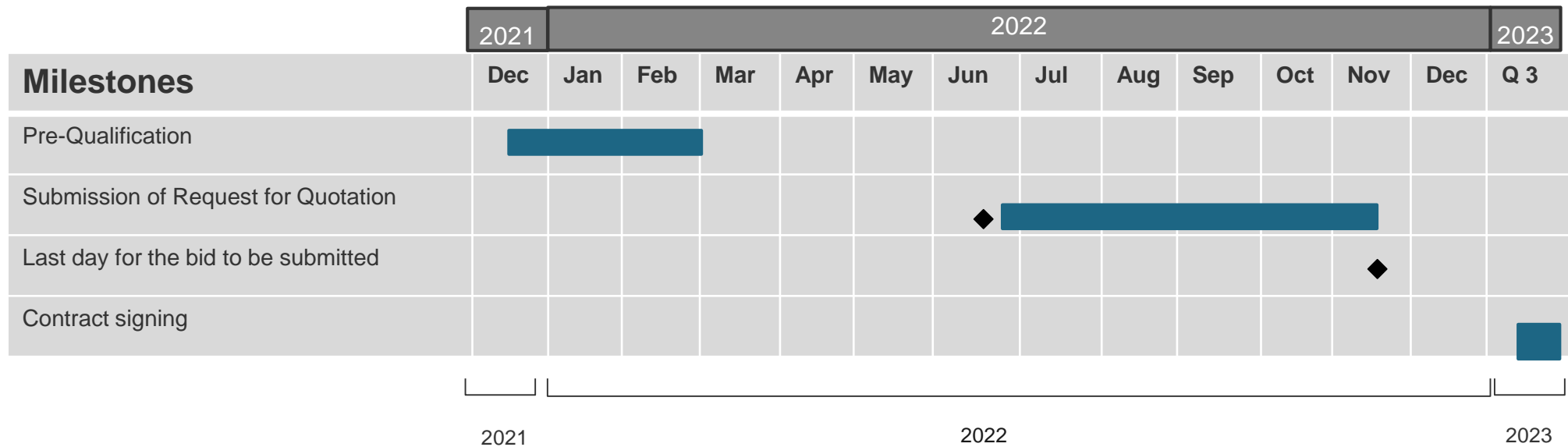
- Voltage Source Converter
- One symmetrical monopole
- Active Power: 700 MW
- DC voltage: +/- 300 kV
- AC voltage: Germany 380 kV, Sweden 400 kV
- AC frequency: 50 Hertz (Both sides – not synchronized)
- Extruded cable insulation
- The two submarine HVDC cables and a submarine FOC are bundled prior to laying. After laying the bundle shall be protected by burial or a rock berm
- Maximum water depth for submarine cable approximately 50 meter
- Underground cable in Germany installed in preinstalled ducts (ducts not in scope)
- Underground cable in Sweden installed directly buried.

# Geographical Overview

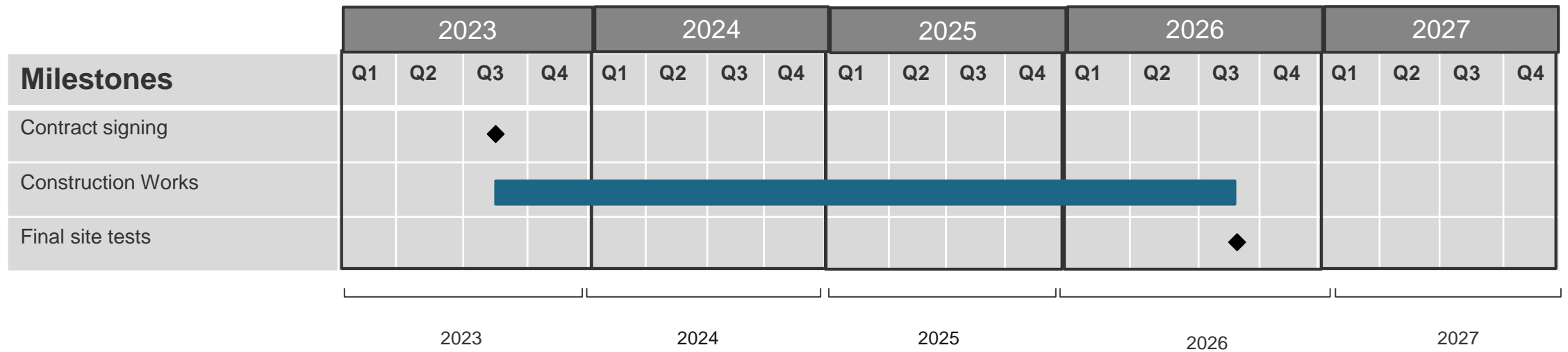


Full system (left), Germany Underground cable route (right)

# Major Milestones for tender



# High level preliminary project time schedule – cable



Note! Details of the construction work to be detailed by supplier and installer

# High level preliminary project time schedule -converter

Milestones	2023				2024				2025				2026				2027			
	Q1	Q2	Q3	Q4	Q1	Q2	Q3	Q4	Q1	Q2	Q3	Q4	Q1	Q2	Q3	Q4	Q1	Q2	Q3	Q4
Contract signing			◆																	
Construction Works																				
• Design phase																				
• Delivery / Mobilization																				
• Assembly /Installation																				
• Commisioning																				◆

2023
2024
2025
2026
2027

Note! Details of the construction work to be detailed by supplier and installer