

Grid tariff

This section contains and describes the life cycle of grid tariff administration. It describes the grid owner's registration process, both of a new grid tariff and possible updates of it, and also how the grid tariff is assigned to one or more metering grid areas. Further it's described how the data hub distributes the registered information and how actors can request it.

[Market Process](#)

[BRS](#)

Filter: Retailer Grid owner ESCO Hub internal Balance Responsible

Market Process

[Register grid tariff](#)

Grid owner

[Assign grid tariff to metering.grid area](#)

Grid owner

[Request grid tariff information](#)

ESCO

Grid owner

Retailer

[Update grid tariff](#)

ESCO

Grid owner

Retailer

Reviewed: 2020-09-18

Terminology

Would you like to learn more about the terminology? Download [Terms and definitions](#) ↓

Register grid tariff

Process description

This process describes how a grid owner registers a grid tariff.

Requirements

- [BRS-SE-815](#) Register grid tariff

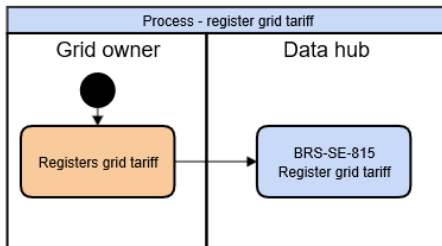


Figure. Diagram - Process - Register grid tariff

Context

- The process starts when a grid owner registers a grid tariff through [BRS-SE-815](#) Register grid tariff.

Scenario overview

Market process scenarios	Description	Implemented steps - R1
8815 - Sc 1	A grid owner registers a grid tariff	0/2

Scenarios

Scenario 1 - A grid owner registers a grid tariff

Step	Description	Rule #	Implemented
8815 - Sc 1.1	BRS-SE-815 Register grid tariff	BRS815-1	
8815 - Sc 1.2	The data hub has responded with a successful response	BRS815-2	

Assign grid tariff to metering grid area

Process description

This process describes how a grid owner connects a grid tariff to a metering grid area.

Requirements

- [BRS-SE-819](#) Assign grid tariff to metering grid area

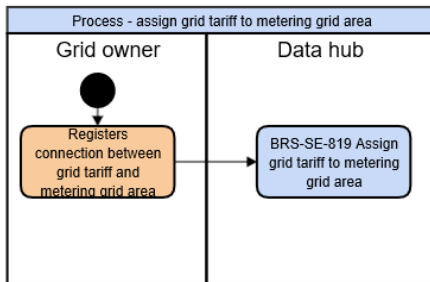


Figure. Diagram - Process - Assign grid tariff to metering grid area

Context

- The process starts when a grid owner connects a grid tariff to a metering grid area through [BRS-SE-819](#) Assign grid tariff to metering grid area.

Scenario overview

Market process scenarios	Description	Implemented steps - R1
8819 - Sc 1	A grid owner assigns a grid tariff to a metering grid area	0/2

Scenarios

Scenario 1 - A grid owner assigns a grid tariff to a metering grid area

Step	Description	Rule #	Implemented
8819 - Sc 1.1	BRS-SE-819 Assign grid tariff to metering grid area	BRS819-1	
8819 - Sc 1.2	The data hub has responded with a successful response	BRS819-2	

Request grid tariff information

Process description

This process describes how an actor requests grid tariff information.

Requirements

- **BRS-SE-846** The retailer requests grid tariff information
- **BRS-SE-864** The grid owner requests grid tariff information
- **BRS-SE-882** The ESCO requests grid tariff information

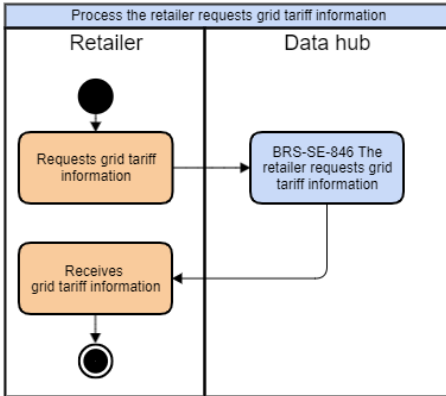


Figure. Process the retailer requests grid tariff information

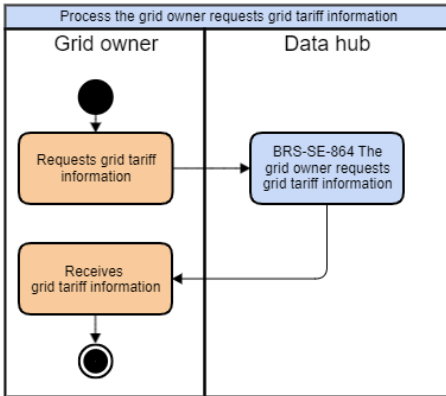


Figure. Process the grid owner requests grid tariff information

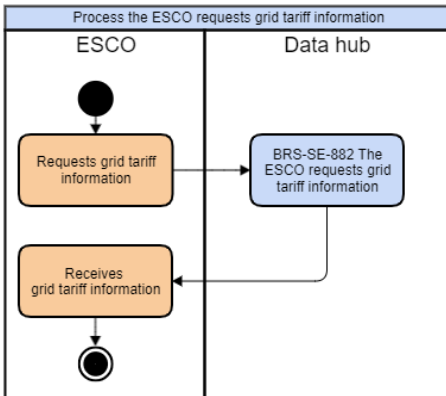


Figure. Process the ESCO requests grid tariff information

Context

- The process starts when a retailer, a grid owner or an Energy service company (ESCO) requests grid tariff information through [BRS-SE-846](#) The retailer requests grid tariff information, [BRS-SE-864](#) The grid owner requests grid tariff information or [BRS-SE-882](#) The ESCO requests grid tariff information.
- The data hub handles the request and delivers the grid tariff information to the requesting actor.

Scenario overview

Market process scenarios	Description	Implemented steps - R1
8818 - Sc 1	A retailer requests grid tariff information	0/2
8818 - Sc 2	A grid owner requests grid tariff information	0/2
8818 - Sc 3	An Energy service company (ESCO) requests grid tariff information	-

Scenarios

Scenario 1 - A retailer requests grid tariff information

Step	Description	Rule #	Implemented
8818 - Sc-1.1	BRS-SE-846 The retailer requests grid tariff information	BRS846-2	
8818 - Sc-1.2	The data hub has responded with requested grid tariff information	BRS846-5	

Scenario 2 - A grid owner requests grid tariff information

Step	Description	Rule #	Implemented
8818 - Sc-2.1	BRS-SE-864 The grid owner requests grid tariff information	BRS864-2	
8818 - Sc-2.2	The data hub has responded with requested grid tariff information	BRS864-5	

Scenario 3 - An ESCO requests grid tariff information

Step	Description	Rule #	Implemented
8818 - Sc-3.1	BRS-SE-882 The ESCO requests grid tariff information	BRS882-2	
8818 - Sc-3.2	The data hub has responded with requested grid tariff information	BRS882-5	

Update grid tariff

Process description

This process describes how a grid owner updates a grid tariff.

Requirements

- [BRS-SE-816](#) Update grid tariff
- [BRS-SE-845](#) The retailer receives grid tariff information
- [BRS-SE-881](#) The ESCO receives grid tariff information

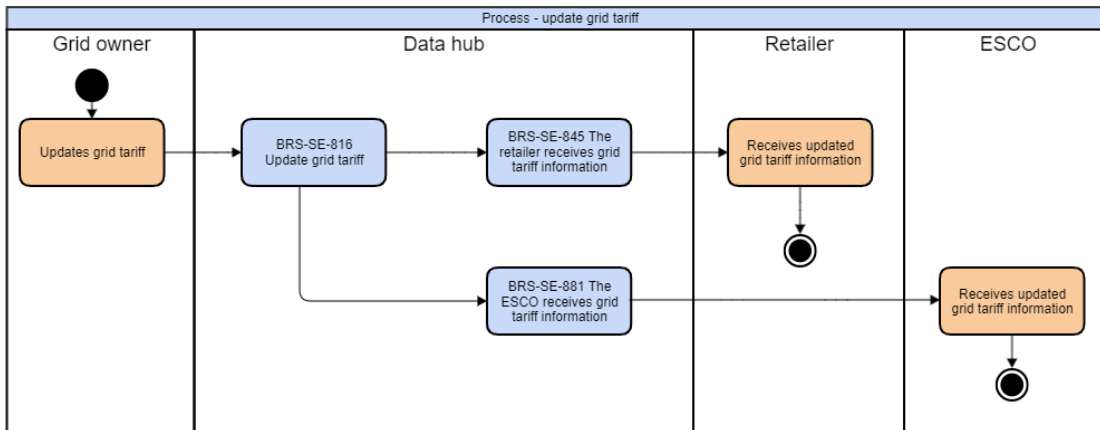


Figure. Diagram - Process - Update grid tariff

Context

- The process starts when a grid owner updates a grid tariff through [BRS-SE-816](#) Update grid tariff. The retailer and a possible Energy service company (ESCO) receives the information through [BRS-SE-845](#) The retailer receives grid tariff information and [BRS-SE-881](#) The ESCO receives grid tariff information.

Scenario overview

Market process scenarios	Description	Implemented steps - R1
8816 - Sc 1	A grid owner updates a grid tariff	0/4

Scenarios

Scenario 1 - A grid owner updates a grid tariff

Step	Description	Rule #	Implemented
8816 - Sc 1.1	BRS-SE-816 Update grid tariff	BRS816-1	
8816 - Sc 1.2	The data hub has responded with a successful response	BRS816-5	
8816 - Sc 1.3	BRS-SE-845 The retailer receives grid tariff information	BRS845-2	
8816 - Sc 1.4	The retailer receives updated grid tariff information	BRS845-5	
8816 - Sc 1.5	BRS-SE-881 The ESCO receives grid tariff information	BRS881-2	
8816 - Sc 1.6	The Energy service company (ESCO) receives updated grid tariff information	BRS881-5	