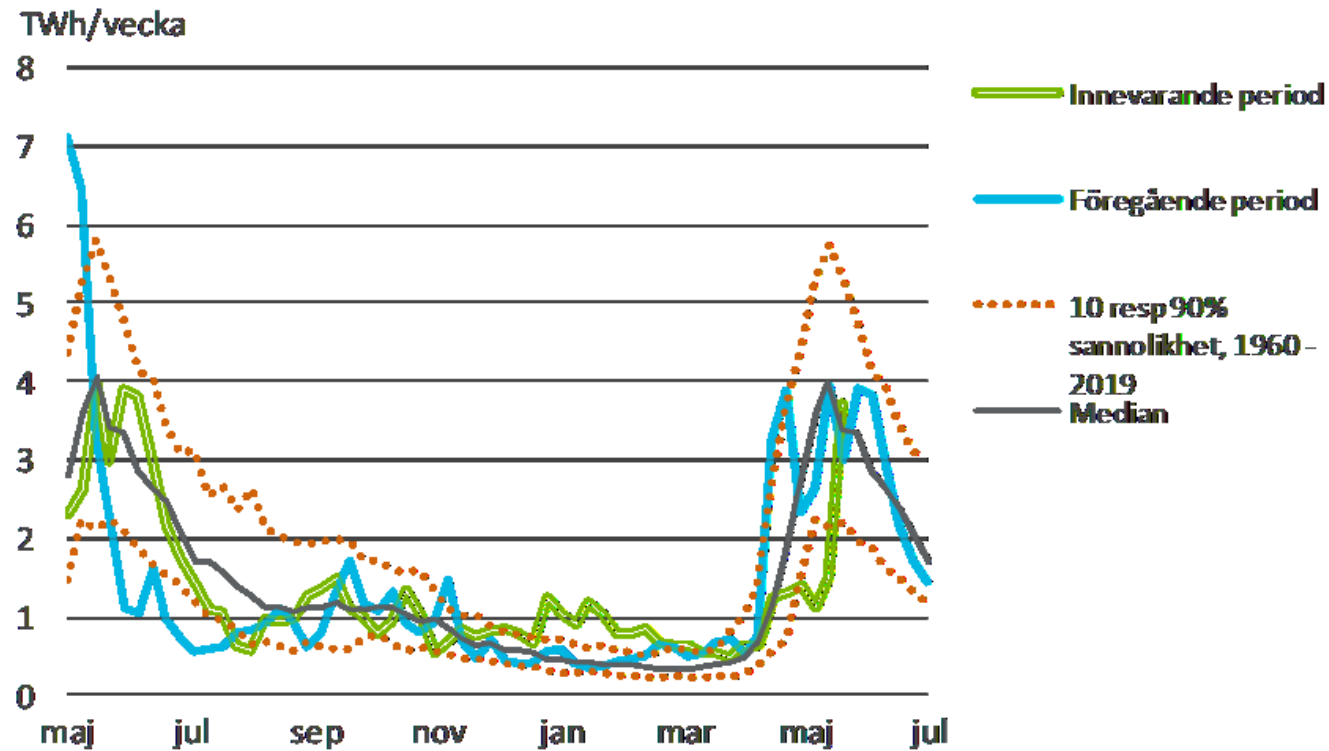


# Magasins- och kraftläge

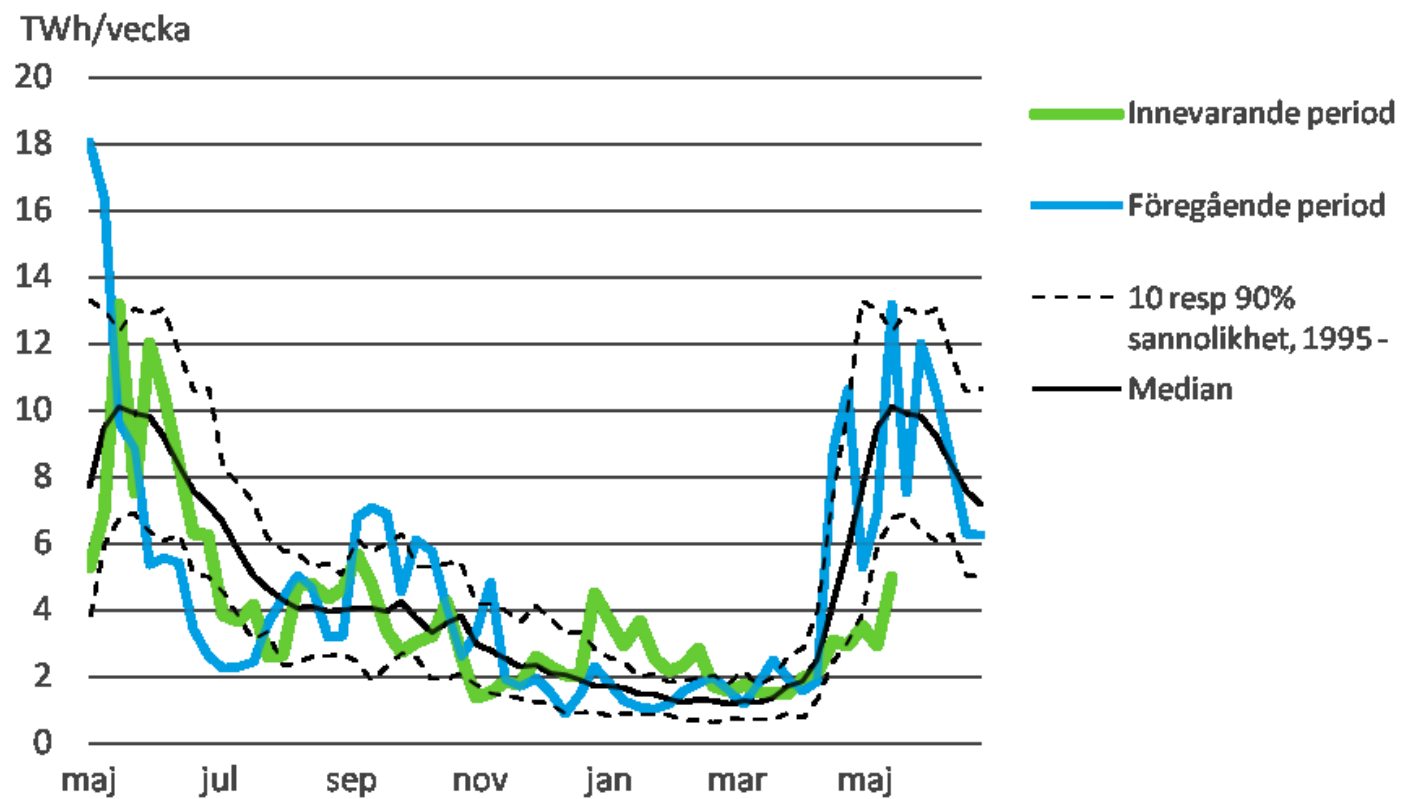
Tom. vecka 21 2020



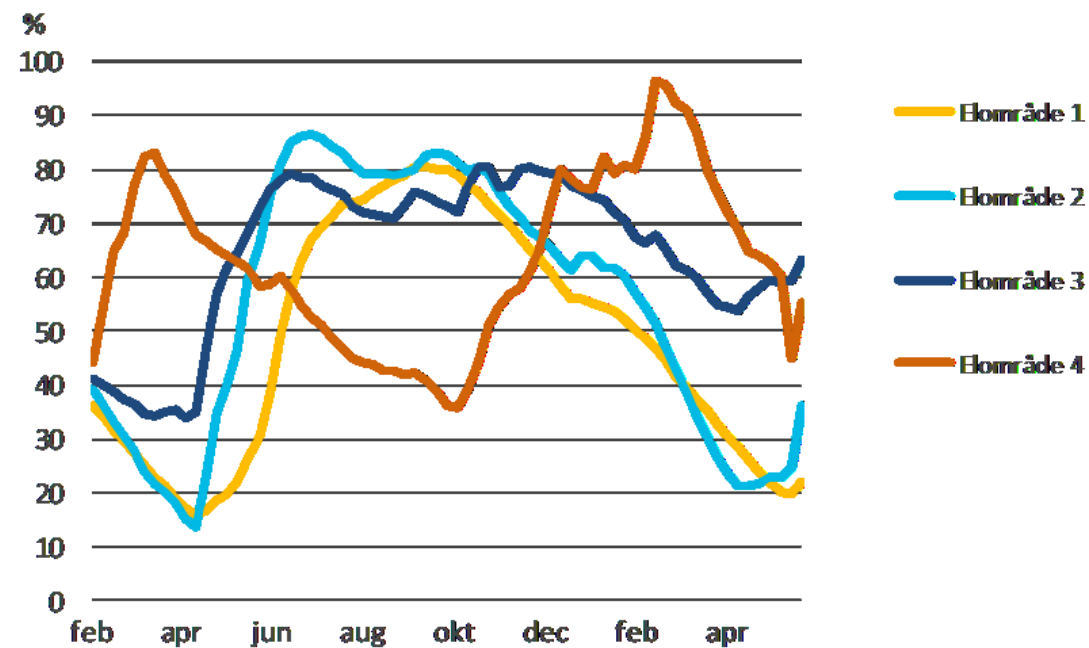
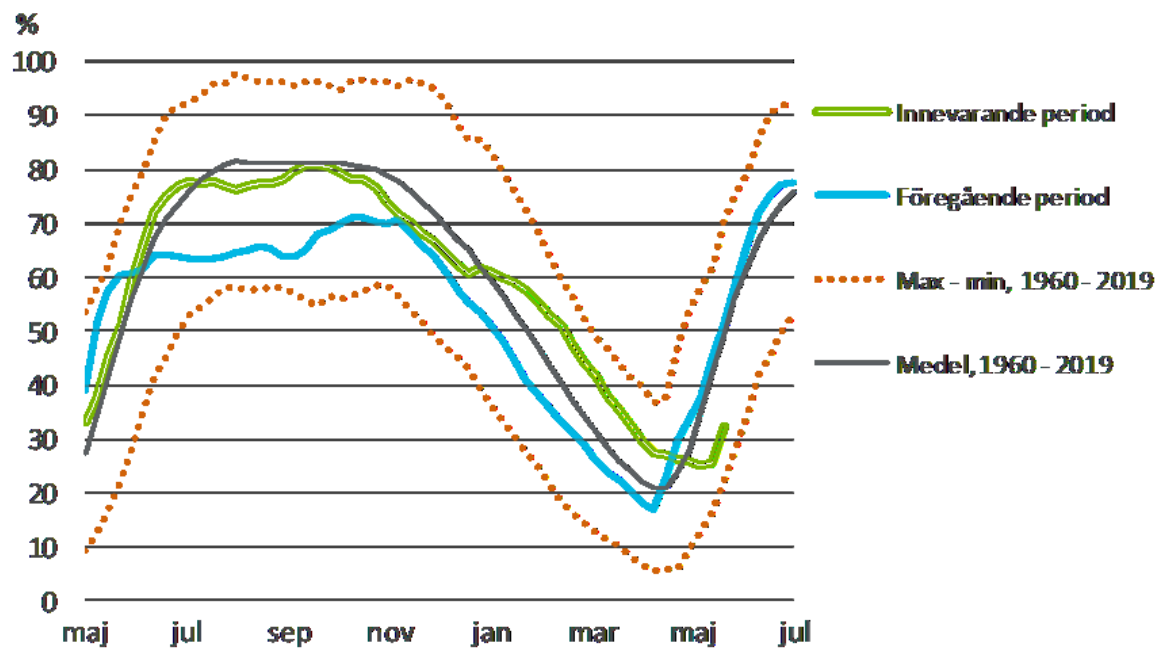
# Tillrinning i Sverige



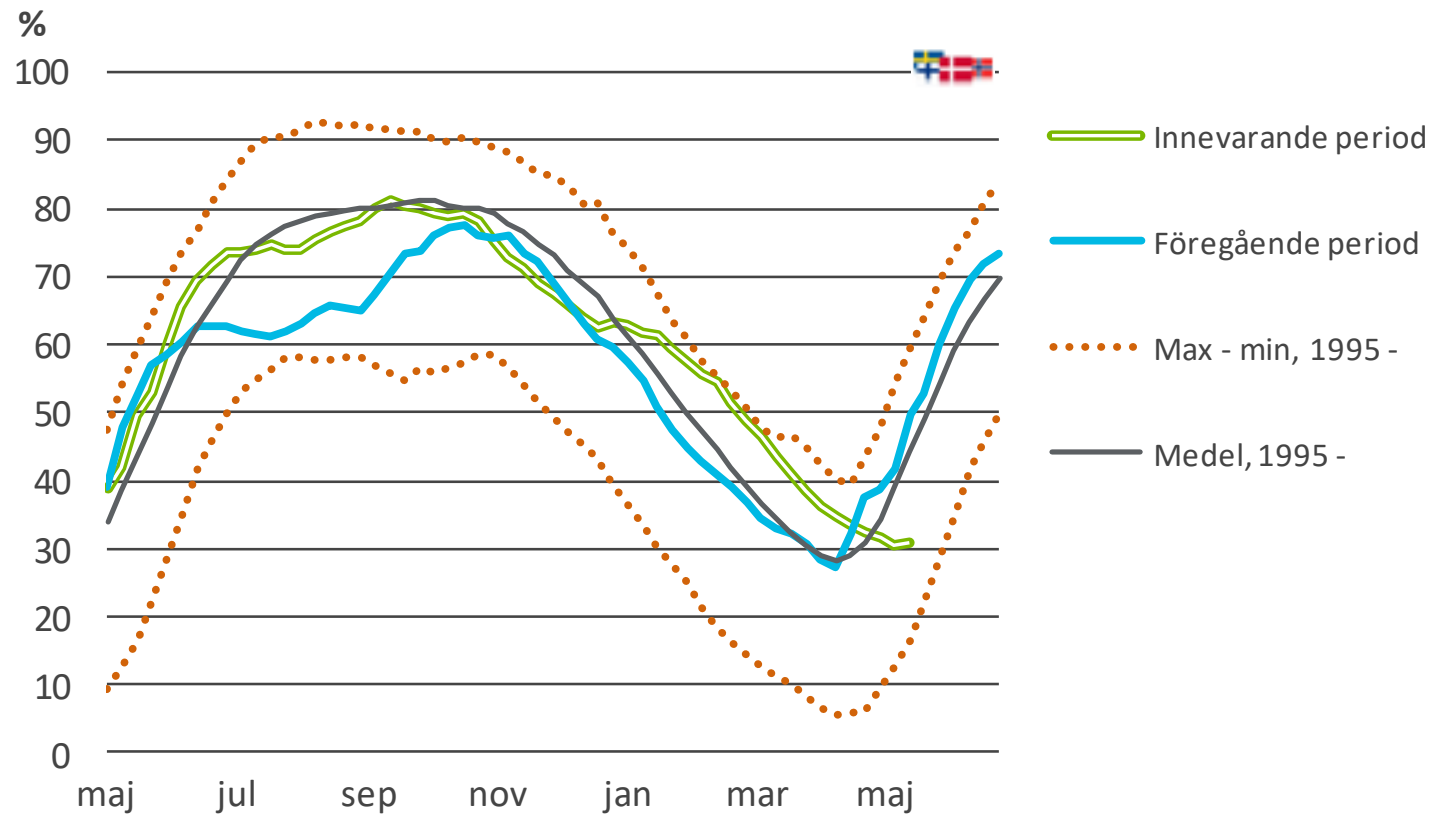
# Tillrinning i Norden



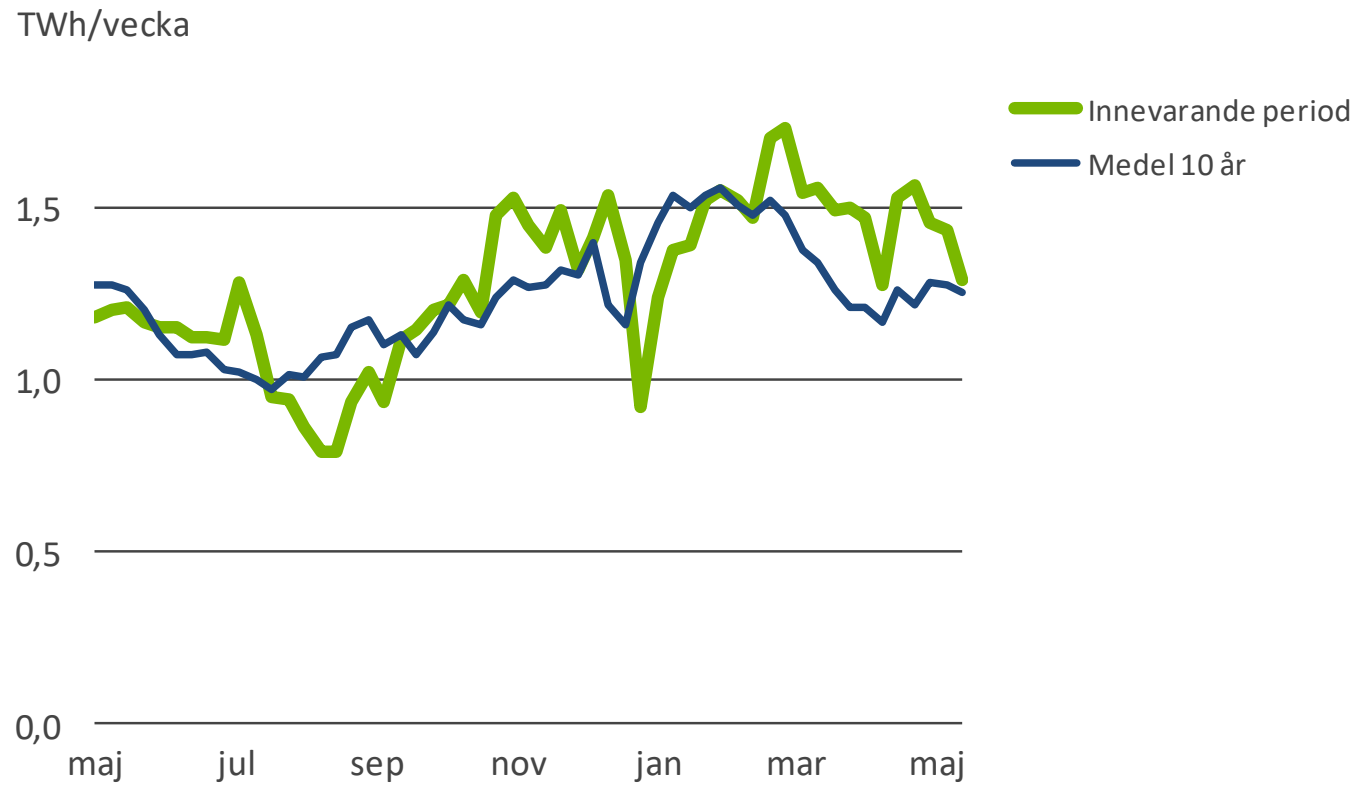
# Magasin i Sverige



# Magasin i Norden

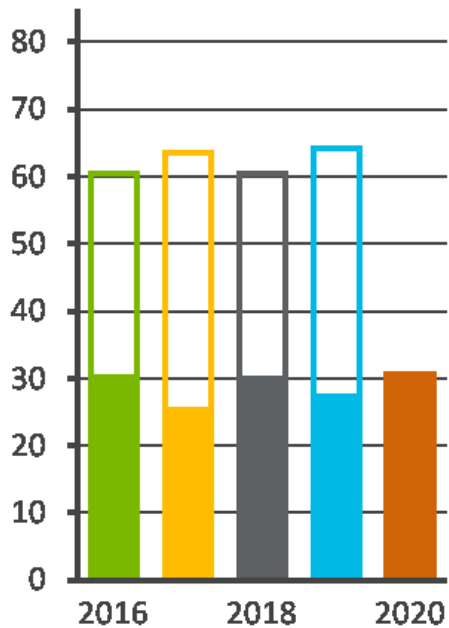


# Vattenkraftproduktion i Sverige

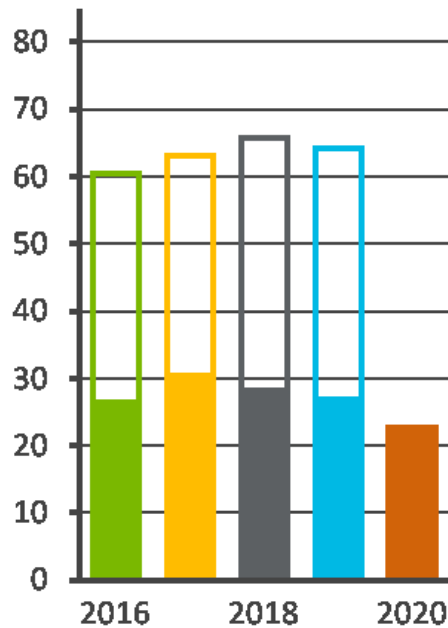


# Total elproduktion i Sverige

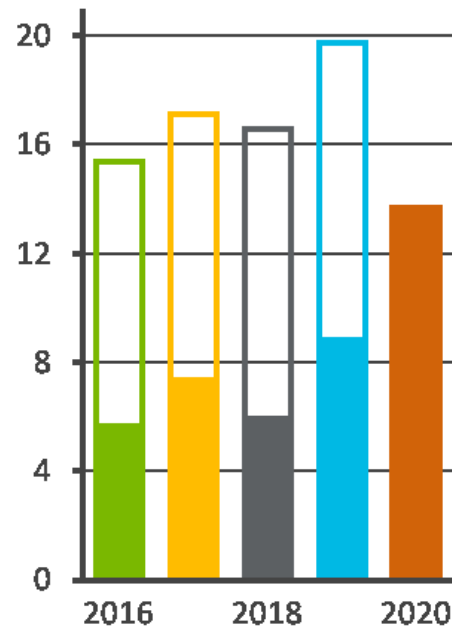
Akkumulerad vattenkraftsproduktion  
TWh



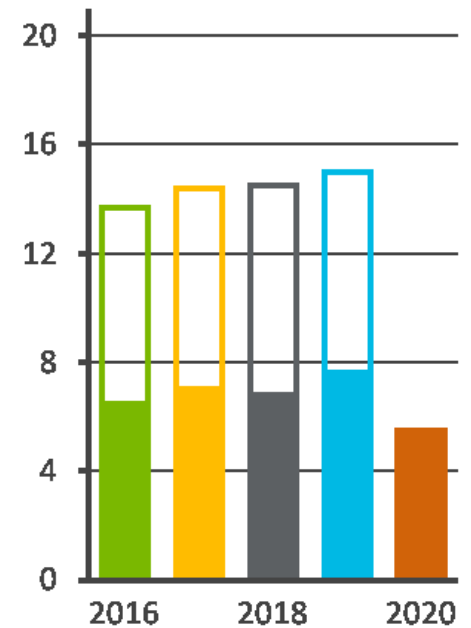
Akkumulerad kärnkraftsproduktion  
TWh



Akkumulerad vindkraftsproduktion  
TWh

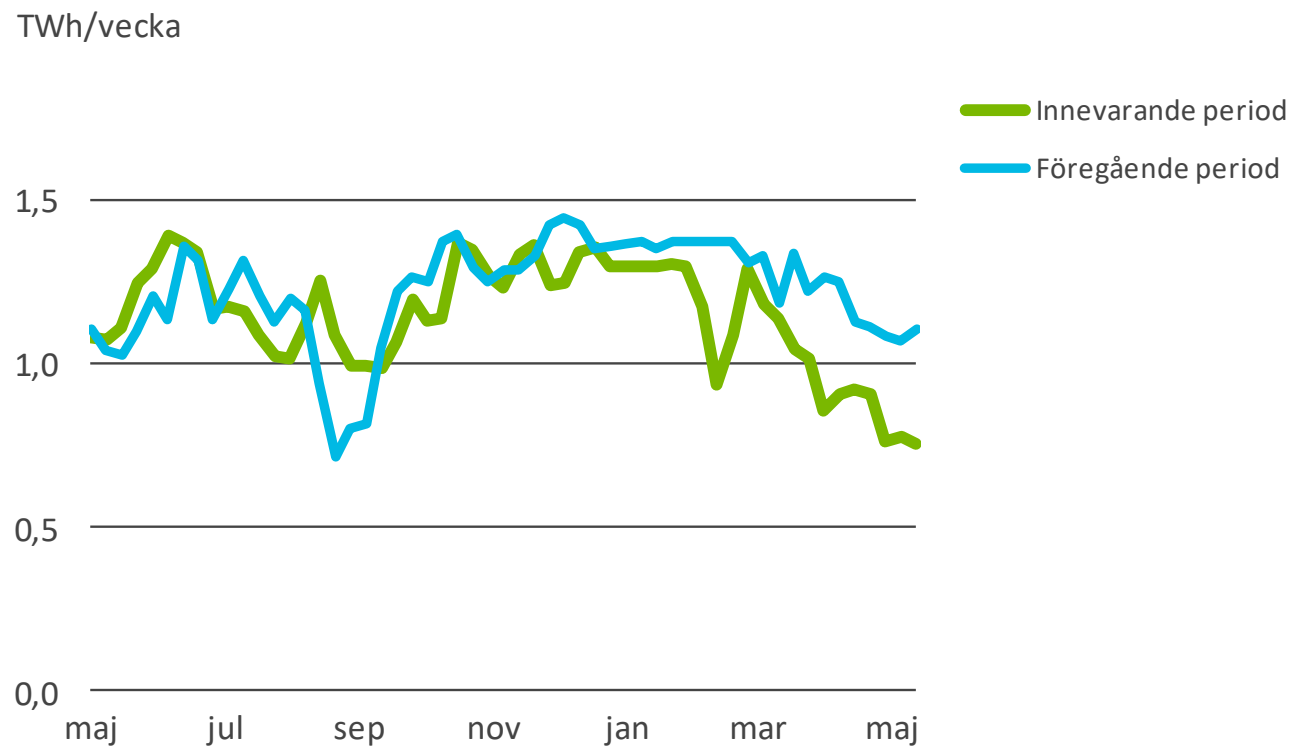


Akkumulerad övrig värmekraftsproduktion  
TWh



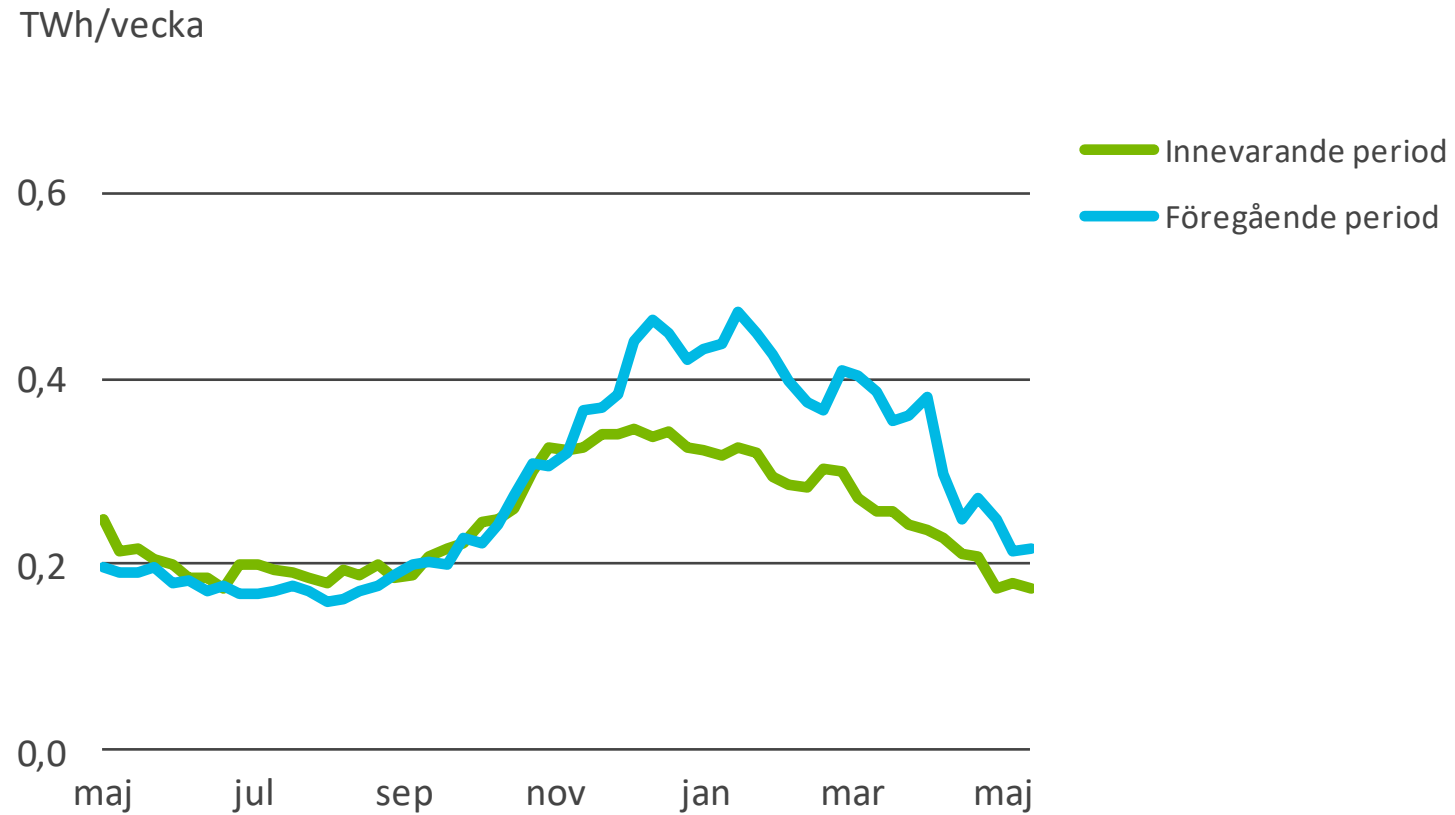
□ Helårsvärde  
■ Årsvärde t.o.m. ve 21

# Kärnkraftsproduktion i Sverige

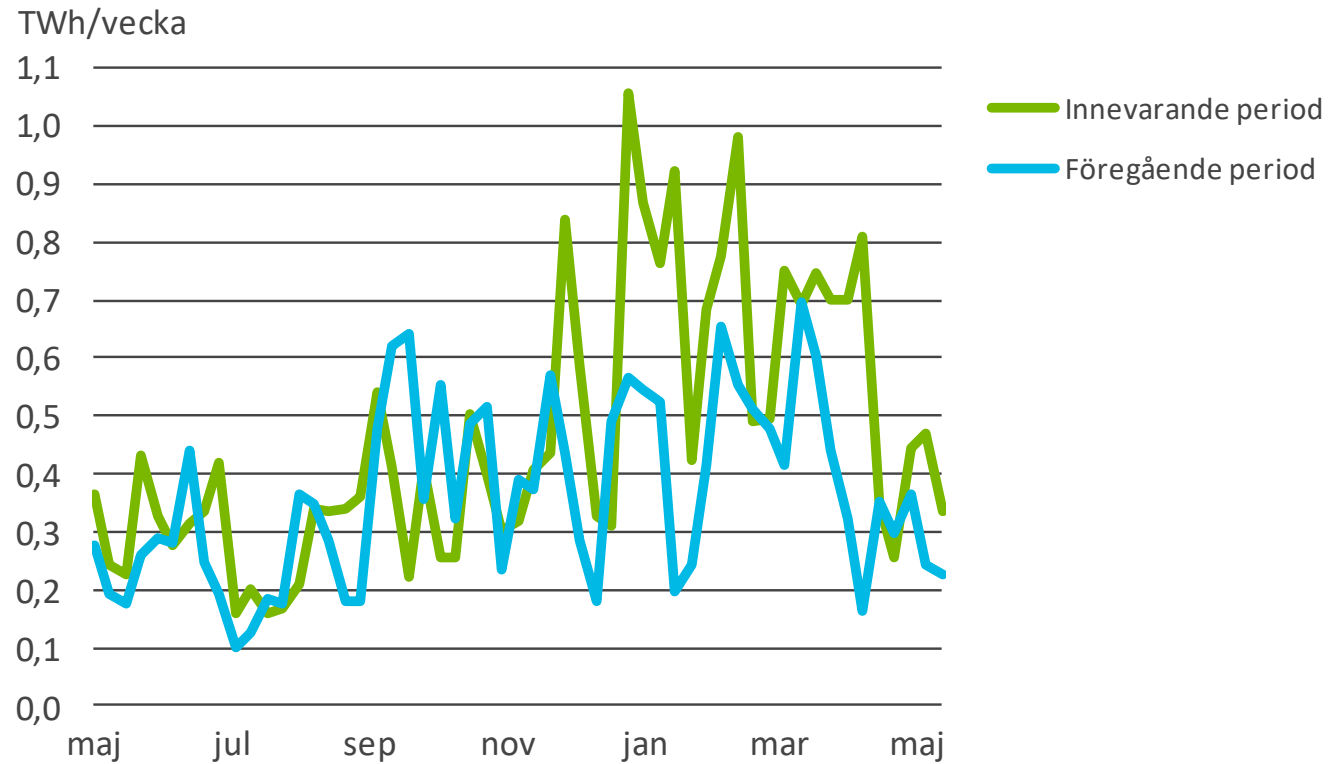




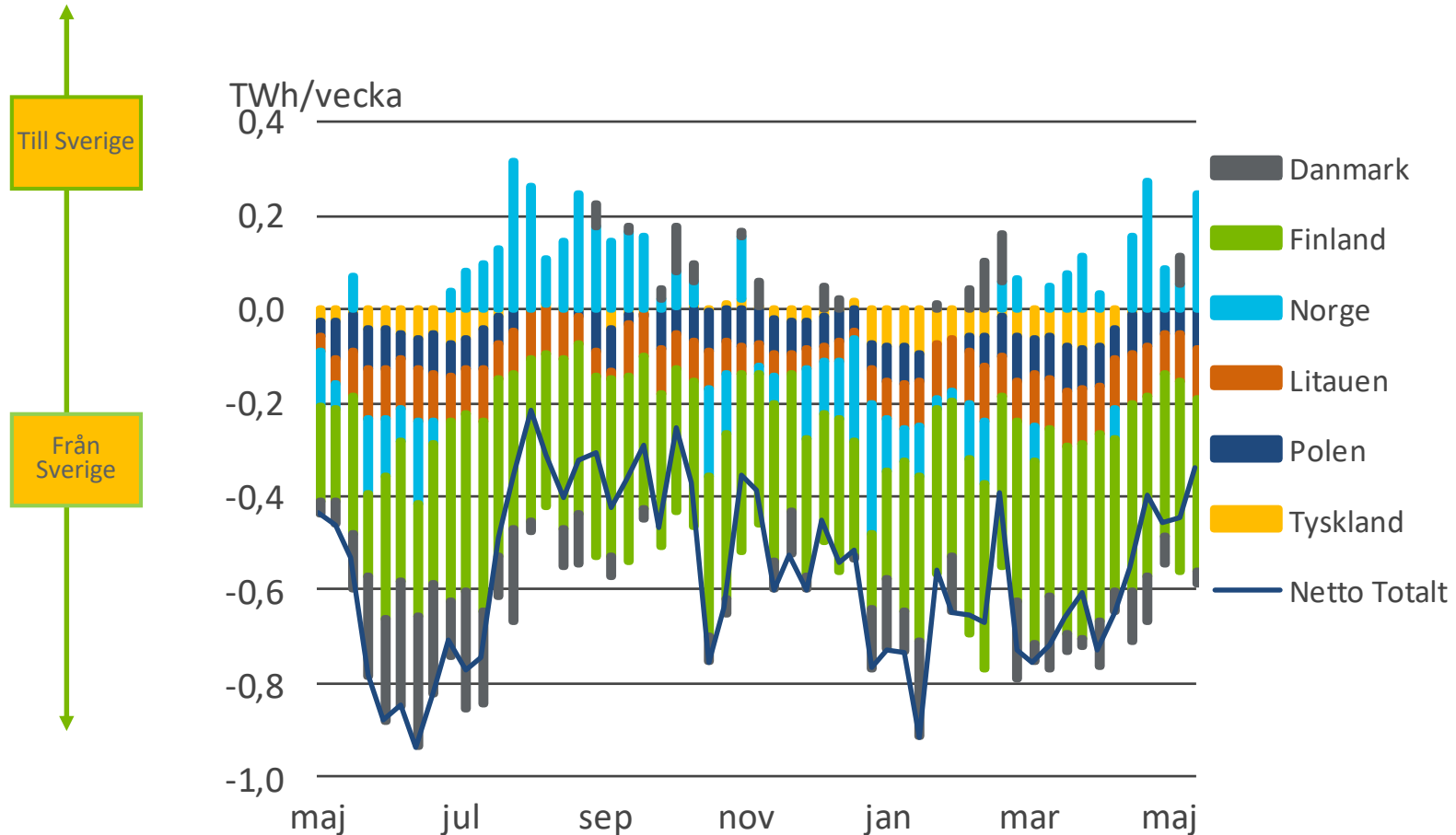
# Värmekraftproduktion i Sverige



# Vindkraftsproduktion i Sverige (+1588 MW)



# Utbyten mellan Sverige och dess grannländer



# Utbyten mellan Norden och dess grannländer

